

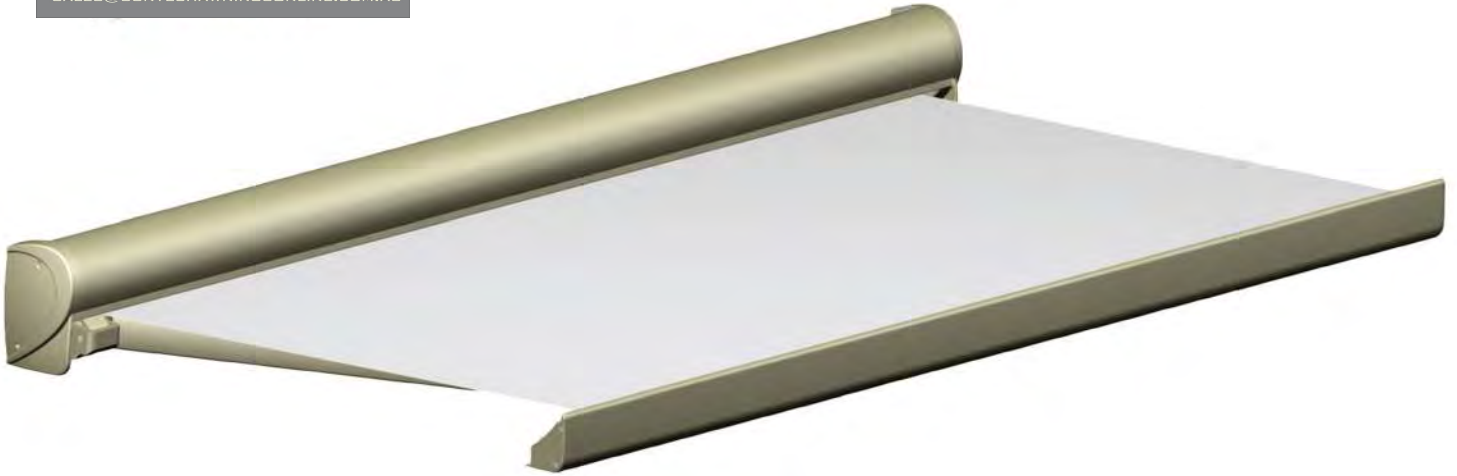
Side View



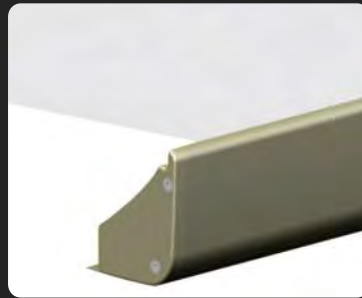
Optional Sun and Wind Sensor

*The BX260 is a compact and relatively flat cassette awning designed and engineered with aesthetics and function in mind. Attention to technical detail ensures years of trouble free operation.*

- The extremely low profile of the cassette integrates perfectly with the facade of the building.
- The awning has an aluminium extruded casing with strong cast aluminium end covers which completely encloses the fabric and arm mechanisms, providing protection against dirt, grime and poor weather conditions.
- When the awning is extended, the strong spring assembly in the arms enables maximum fabric tension to be maintained.
- The BX260 can be equipped with electrical operation using a tubular motor.
- For the ultimate in comfort, an automatic sun/wind sensor regulates the awning automatically, depending on the light intensity and the wind speed.
- Manual operation using a crank and a gearbox is also available.
- With a five year guarantee, you can expect that only the best materials are used and a high level of importance is placed on providing the perfect finish.



Low Profile Cassette



Front Rail



Side View

## Technical Information:

- The Arms:** — Extruded powder coated aluminum .
- The Hinges:** — High pressure cast aluminum.  
— Durable slide bearings of toughened bronze with a PTFE sliding layer.  
— The most heavily loaded parts are thermally treated.
- Springs and Steel cables:** — Zinc plated high quality spring steel.  
— Grease impregnated zinc plated steel cables ensure an even division of power.
- The Shoulder:** — Extruded powder coated aluminum .  
— Angle range from 10° to 40°.  
— Design eliminates flapping and dropping of arms.
- Minimum Size:** — 2 meter in one part with two arms.
- Maximum Size:** — 6 meter in one part with two arms.  
— 7 meter in one part with three arms.  
— 12 meter in 2 parts with four arms.
- Minimum Width:** — 2 meters.
- Maximum Width:** — 6 metres with two arms.  
— 7 metres with three arms.  
— Connectable to 12 metres with four arms.
- Extensions:** — Five standard sizes: 1.5m, 2m, 2.5m, 3m, 3.5m.

