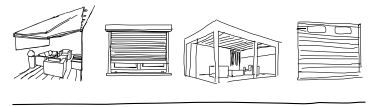


**HAROL®**



**After late summer  
enjoy late  
summer again**



# *Instant holiday feeling, all year round!*

What if you could enjoy that blissful holiday feeling all year round? Together with your family and friends? With that in mind, Harol has developed the outdoor living range.

So far, it has evolved into the most complete and comprehensive range on the European market.

But what you will appreciate above all: this range of innovative terrace solutions achieves an unparalleled level of luxury and comfort. Just relax, take a breath of fresh air and unwind ...

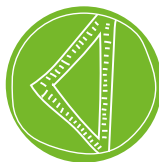
## *Harol is pure enjoyment!*



INSTALLED BY  
PROFESSIONALS



MAINTENANCE-  
FRIENDLY



MADE TO  
MEASURE



CONTEMPORARY  
DESIGN



TOP-QUALITY  
BELGIAN  
PRODUCT



ROBUST  
WARRANTY



HEALTHY  
INDOOR  
CLIMATE



- P6 Pergola collection  
Every day is terrace weather
- P18 Patio Collection  
Suitable for small and large areas
- P32 Slatted roof collection  
The ultimate in luxury for the self-indulgent

# Outstanding enjoyment with Harol

New build or renovation? Classic or modern? Our outdoor living solutions are extremely versatile and perfectly adaptable to suit your family, architectural style and type of building. Moreover, they effortlessly meet the increasingly stringent requirements in terms of comfort, safety and energy efficiency. For three generations we have been building on our experience in sun protection solutions, and it shows!

In addition to its permanent value, Harol is also a real trendsetter. We are continuously innovating and perfecting. This is the only way we can succeed in our mission: to let you enjoy a customized solution that offers you everything. And only the best is good enough!

*Annick Draclants*  
*CEO Harol*



*Whichever outdoor solution you choose, you will always benefit fully from these advantages:*



## Comfort

Our motorized solutions provide the ultimate in convenience. Remote control, smartphone or tablet: one command is sufficient to operate them all. With one or more sensors you can even enjoy automatic protection against sun, rain, wind or snow. Want even more comfort? Finish your solution with lighting (LEDs or spotlights) and heating. This will allow you to enjoy your outdoor room all year round. And what about integrated music in your slatted roof? You'll be able to create the right atmosphere instantly!



## Safety

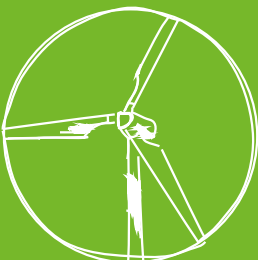
The structure of our solutions is made of durable aluminium and subjected to various mechanical and dynamic load tests. All our outdoor living solutions carry the CE label (European directives on safety). Installation is always carried out by experienced professionals. This is how we contribute to your safety.



## Design

From classic to ultra-modern: our comprehensive outdoor living range blends in with the most diverse architectural styles. Time and time again we choose sophisticated, pure design with no visible attachment elements. For the finish of the aluminium structure, you can choose from over 300 RAL colours and scratch-resistant textured coatings. Your guarantee of perfect integration with your home!

All paints are UV resistant. And as far as the fabrics go, we made no compromises. We only work with the best materials. They are available in a large variety of colours and prints. Unicolour, fantasy or striped ... You choose!



## Energy efficiency

Each outdoor living solution that has been fitted outside a window, will keep out the sun. This allows you to enjoy a pleasant indoor climate, and a reduced need for energy sources such as air conditioning systems to provide cooling in your home. And there is more: our outdoor living solutions allow sunlight in when you want it, a natural way to heat your home. Result: appreciable savings on your energy bill. And the attractive view of your garden or patio? That remains unaltered!

**All these features - together with the largest offerings on the market - make our outdoor living solutions the ultimate reference point!**

*Genuine must-haves!*

# Pergola collection

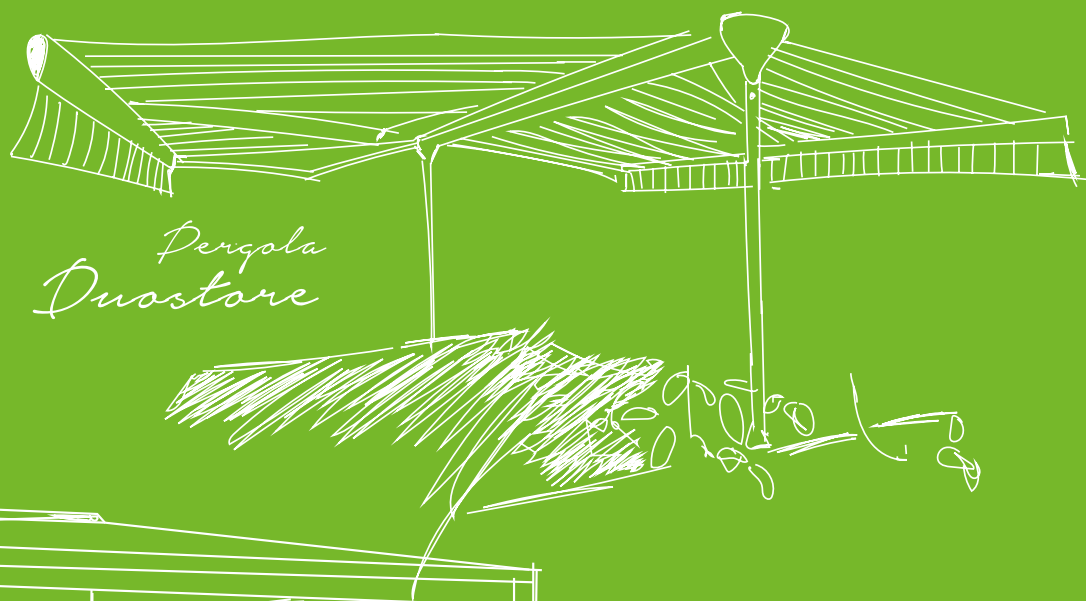
Would you like to create a cosy haven in your garden, or perhaps you own a restaurant with a terrace? Pergolas, with their fabric fully retracted inside the box, are the answer to both situations. All solutions offer shelter from sun and rain. You can make it even more cosy by adding extra heating and lighting. You could call us 'the terrace atmosphere creators'.

→ *Every day is  
terrace weather*



*Pergola  
Versuz*

*Pergola  
Terrace awning*



*Pergola  
Duostore*



*Pergola  
Air*

More info:  
↳ [www.harol.com](http://www.harol.com)

**HAROL®**



Air



*Pergola*  
**HAROL**

Versuz



Terrace awning



Duostore

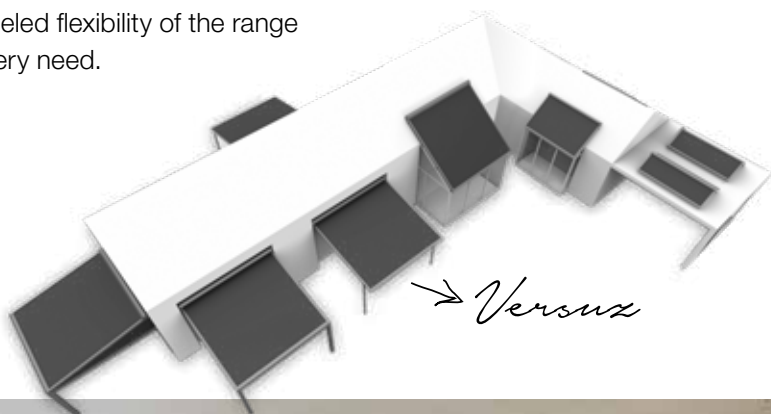
# Versuz

## *Surprisingly slim!*



Unlike a slatted roof or folding fabric, the Versuz fabric rolls up fully into the box. That keeps your fabric looking bright for years. With this elegant eye-catcher you can enjoy your patio, pool or garden for longer. Discover pure design combined with ultimate comfort. Its super-slim guide rail, extremely neat box and narrow posts give it a refined look. An ingenious ZIP system will ensure the fabric stays taut for years.

Versuz is part of the award-winning VZ concept: **one system with infinite possibilities!** The VZ concept is the culmination of Harol's years of expertise in zip technology combined with its famously successful fabric technology for veranda sun protection. The unparalleled flexibility of the range means there is a custom solution for every need.



*Pergola*  
**HAROL®**



# Refined down to the smallest detail

SUPER ELEGANT



Super elegant thanks to its stripped-down design.

COMPACT BOX



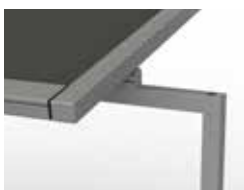
Compact box available with integrated, dimmable LED lighting.

ZIP SYSTEM



Taut fabrics thanks to the innovative ZIP system.

FLEXIBLE POST POSITION



Fits any patio perfectly: thanks to the flexible position of the posts.



CLOSED BOX



The fully enclosed box keeps fabrics bright for years.

## Dimensions

Max. width per element (mm)	6000
Max. drop (mm)	4000
Max. area linked	64 m <sup>2</sup>



## Colours

All RAL colours and a wide range of textured coating colours are available as standard at no extra cost.

## Any fabric you want

Really anything is possible in terms of fabrics. Translucent fabrics, completely opaque fabrics, through to completely waterproof fabrics in PVC or acrylic.

## Options: lighting and heating

Every terrace is different. Nevertheless, thanks to the versatility of Versuz, Harol can offer the ideal solution for almost any situation. Once you have found the perfect terrace solution, we will make sure that you can enjoy it for even longer with integrated LED lighting and handy heating elements - making those long summer evenings even cosier. And the late summer? It seems to last all year. Just fabulous!



**Standard:**  
**IO home control**

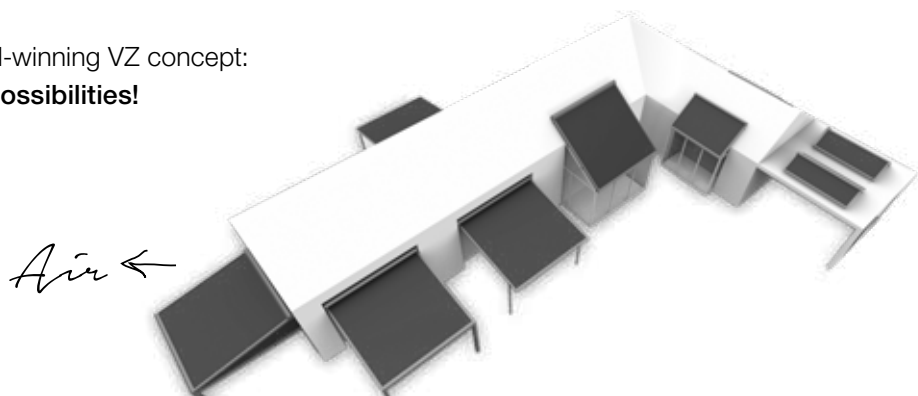
# AIR

*Enjoy extra  
protection and freedom*



Even more protection and freedom to enjoy your garden and terrace all year round. That is the promise of the Harol AIR, an outdoor living innovation in the award-winning sun protection system. Let it rain. Vertical screens and integrated water drainage mean it won't bother you. The fully-enclosed box will keep your fabric bright for years. Glass sliding walls with integrated LED lighting complete the package and your comfort.

The AIR is part of the award-winning VZ concept:  
**one system with infinite possibilities!**



*Pergola*  
**HAROL®**

# Live more outdoors

---

## Dimensions

Max. width per module (mm)	6000
Max. drop (mm)	5000
Max. area, per module	25 m <sup>2</sup>



## Colours

All RAL colours and a wide range of textured coating colours are available as standard at no extra cost.

## The right fabric for a perfect result

To live in perfect harmony with your home, Harol can supply the following canvases: Soltis 86, Soltis 92, Sunworker and Expansion. The fully-enclosed box protects the fabric from wind and weather.

## Enjoy your AIR even more!



Integrated wind-resistant screens



Glass sliding walls



LED surround lighting



Lighting and heating

# Duostore

*Cosy retreat with  
all the comforts*

Looking for a cosy place out of the sun? Under a romantic self-supporting Duostore you are guaranteed to keep cool. This innovation is the result of our many years of experience with the folding arm awning, now a classic. The Duostore combines two of these screens, fitted in an aluminium frame. The Duostore can be integrated in three ways: self-supporting, fixed on a terrace floor, with central screw support or through central support in concrete surface.



# Clever piece of Belgian craftsmanship

---

Quality solutions: that's our goal. Each component of the Duostore is specially made with an eye to durability and user-friendliness. The sturdy frame is constructed of galvanized steel, the lateral folding arm awnings are firmly attached with stainless steel screws. Thanks to the innovative Clip-on Clip-off profile made from extruded PVC, we can fit the fabric screwlessly to the axle. Result: a smart, streamlined look.

## Dimensions

Width (mm)	Drop (mm)	Height (mm)
3600	1500 x 2	2600
4800	2000 x 2	2600
6000	2500 x 2	2600

## Colours



All RAL colours and a wide range of standard colours for the textured coating are available at no extra charge. With the acrylic fabrics you can choose from solid colours or block and fantasy stripes.

## Extremely durable fabrics

Each Duostore has an acrylic fabric of the highest quality:

- The acrylic fibres are coloured in the mass, for a fresh look that stays attractive for years.
- Extremely durable, with a weight of approx. 300 g/m<sup>2</sup> and a thickness of 0.5 mm.
- Treatment against mould and dirt included, for a maintenance-friendly solution.
- Also available in a self-cleaning or fireproof version.

## Options: lighting and heating



To enjoy your patio in the evenings, Harol can offer you the Storelight lighting and heating system that is fitted to the Duostore. We supply the Storelight ready wired, with integrated electronic transformer.

# Terrace awning

*Loved by you and  
your guests*

Do you have a large terrace and often entertain many guests? With the Terrace awning they will be doubly excited to visit. They can come and enjoy the fresh air, no matter how bright the sun is shining. The cosy look of the fabric makes the visit even more enjoyable.

**The greatest asset of the terrace awning?** You can roll down the fabric completely, so you are fully protected from the sun, no matter how low it is in the sky. The controls are extremely easy, because they are motor-driven.

**Blessed with an extra large terrace?** No problem. Thanks to the extremely robust construction and the structure divided into separate fields, you can extend the awning infinitely. Moreover, the Terrace awning has a very deep drop, up to 6 metres.



# A reliable solution

---

Looking forward to some extra comfort? Pimp your terrace awning with gutters and outlet baskets, ideal during heavy rainfall. If you have opted for built-in lighting and heating, then you can stay and chat until the early hours. No wonder the terrace awning also works very well as a catering solution!

## Dimensions

Max. width 1 field (mm)	5000
Max. drop 1 field (mm)	6000
Max. rollout 1 field (mm)	8500
Max. area fabric	40 m <sup>2</sup>

## Colours



All RAL colours and a wide range of standard colours for the textured coating are available at no extra charge.

The fabrics are available in an exceptionally rich colour palette.

## Pretty in prints

With the acrylic fabric of your Terrace awning, you're spoilt for choice. Plain, with blocks or fantasy stripes ... Whatever colour or print you choose, you will enjoy it for a long time to come. Our fabrics are coloured in the mass, which offers protection against discolouration by the sun. You don't like maintenance? Your fabric is mould and dirt repellent, it does not need much care. Thanks to a unique spring system in the extension pole, it remains taut both when moving and when stationary.

## Options: lighting and heating



Convenient options such as gutters, outlet baskets, lateral fabric, wind and rain protection, advertising text, heating and lighting are all possible. Like the Storelight, you can fit it to your sun protection. Storelight with only heating, heating and spotlights or only spotlights. Plenty of choice...

# Patio Collection

The innovative Patio folding roof system turns your garden or patio into a cosy outdoor area! The main asset: the folding roof that fully opens and closes. This way, you benefit from maximum light and are able to enjoy the year's first rays of the sun. Other important advantages: the rainproof fabric, the solid and wind-resistant structure and the ability to further extend.

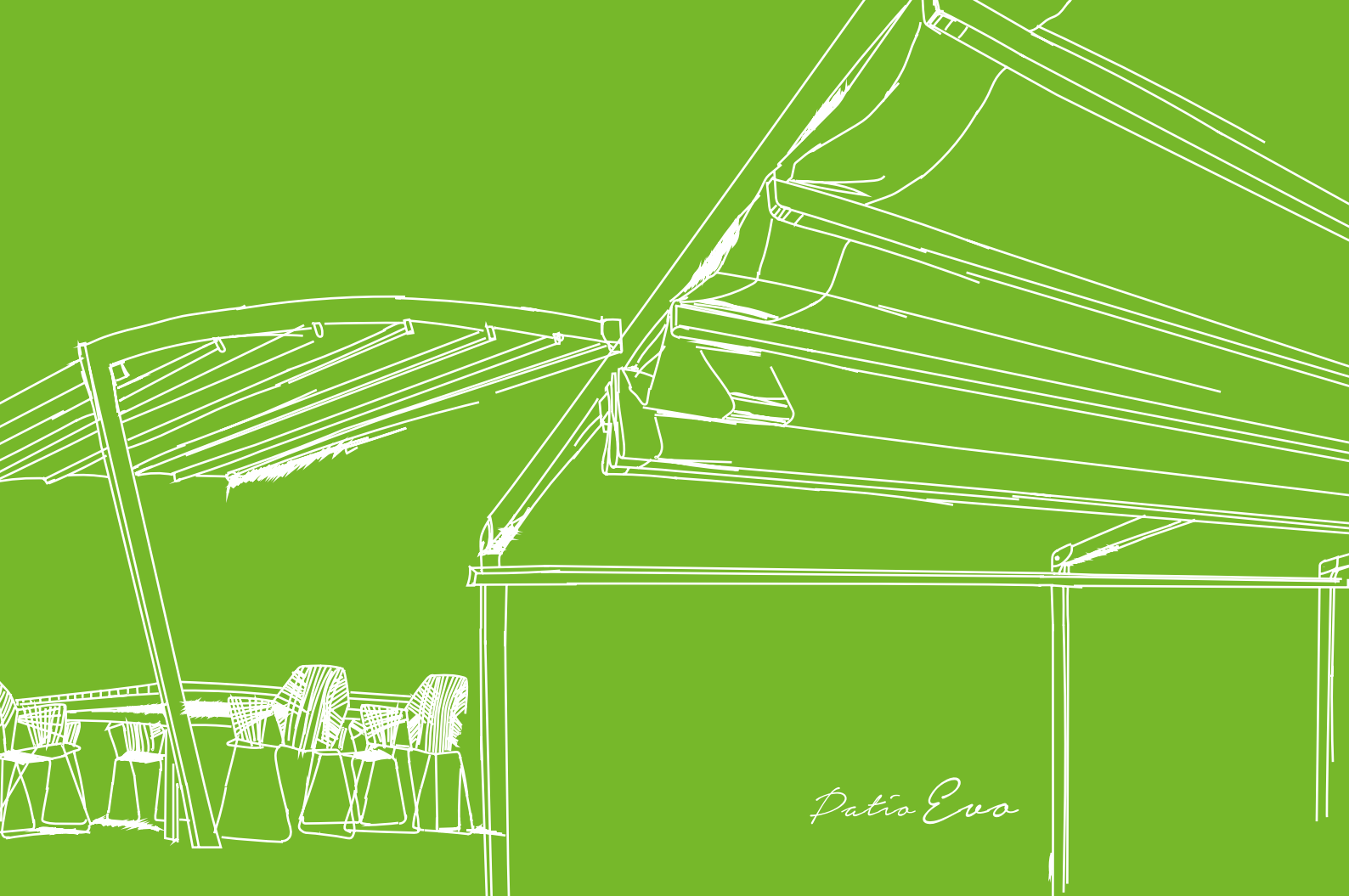
You can start with a roof and, at a later time, add heating, lighting and lateral screens to complete your solution to the maximum extent possible. Together we can tick all the boxes on your wish list!

Free-standing or lean-to? Sleek and modern or warm and natural? Aluminium or wood? A contemporary shade or the colour of your windows and doors? It's all possible. Do you need to span a large area?

No problem, this solution is available in very large sizes. For a bigger extension you could even make it extra large. You have probably noticed: the extensive Harol range makes the possibilities almost endless.

The optional vertical wind-resistant screens for example, were specially designed to protect you from wind and lateral rain. Do you want to keep that attractive view of your garden, permanently? Then go for partially transparent fabrics or windows. Good to know: all materials are top-quality and can easily withstand wind gusts up to 100 km/h.

→ *Suitable for small and large areas*



*Patio Evo*



*Patio One*

More info:  
→ [www.harol.com](http://www.harol.com)

**HAROL®**

*Patio Collection extension  
or between two walls*



Woodplus



Fusion



Fusion



Still



Alu



Tecnic



Infinity



One



Evo



Wood



Level

# *Self-supporting Patio designs*



Phoenix



*Patio*  
**HAROL®**



Nomo



Nomo



Rialto



Phoenix

# Folding roofs

**100%  
WATER-  
PROOF**

An extremely important part of any Patio is the folding fabric of the roof. All our Patio models come standard with a blackout (white or ivory) or translucent rain-resistant fabric (full colour palette). Our fabrics are meticulously finished and meet the highest quality standards. They are 100% waterproof, self-extinguishing and treated against mould. They also have a standard tight fabric suspension with anti-drip system. And the correct angle makes this suspension ideal for optimal drainage. Prefer a looser fabric? Then go for a wave type: parallel, zigzag or one side.

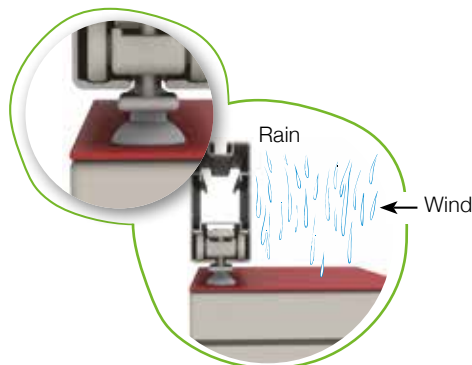


One

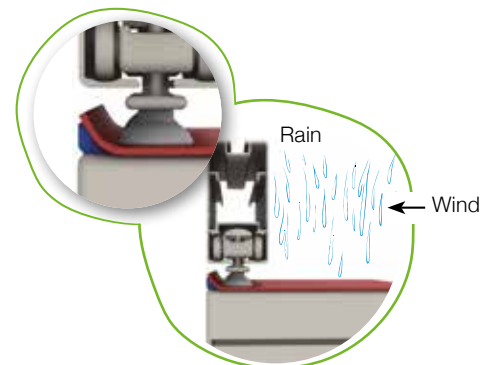
**PATENTED  
ANTI-DRIP  
SYSTEM**

## Anti-Drip System

This simple system allows the fabric to be pushed upwards at the end, so the rain water cannot drip down the sides. This anti-drip system is standard with the tight fabric suspension.

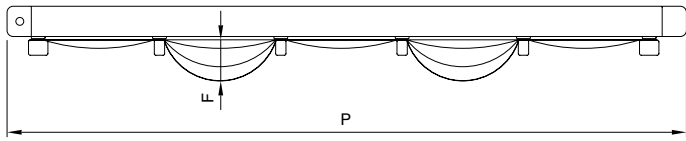


Fabric without anti-drip system

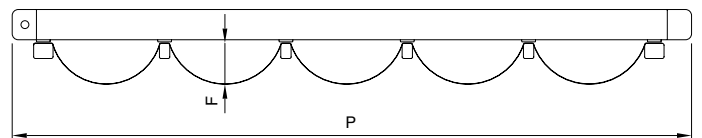


Fabric with anti-drip system

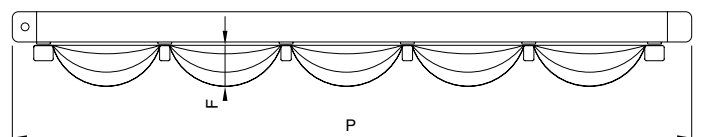
Fabric suspension: Zigzag



Fabric suspension: Wave fabric



Fabric suspension: Wave 1 side



# Innovative operating system

---

The Safety Box motor housing is made from aluminium extrusion profiles and has stainless steel assembly brackets. You can adjust the power for effortless operation - no matter how large the folding roof is. It ensures the fabric is pulled smoothly taut, even with fluctuations in temperature. This motor - made by the European manufacturer Somfy - is whisper quiet and easy to operate via a remote control. With a connection to a home automation system, Somfy lets you enjoy ultimate comfort.



# Vertical wind-resistant screens

---

Are you looking for maximum protection from the wind and weather? Then you are protected with the integrated vertical screens, for two sides and/or the front. All year round you will be able to enjoy the folding roof on your terrace! Even when there is a strong wind, as these screens are wind-resistant and windproof. Do you enjoy a view of your garden? Then choose a fabric with a window or a translucent fabric. The option screens bring you one step closer to the ideal outdoor room!



# Heating and lighting

Looking for comfort that allows you to enjoy your solution throughout the year? Choose LED lighting integrated with the profiles of the fabric, also available in RGB for even more atmosphere. Prefer the warm colour of spotlights? Then go for the convenient Storelight system, with or without integrated heating. You can personalize Storelight to match the colours of your patio and exterior joinery, making it picture-perfect. It is available in the full RAL colour palette and with scratch-resistant textured coating without additional cost.



## Colours

All RAL colours and wide range of colours for the textured coating. (K-7 RAL range)



Recommended colours\*

BIANCO  
PR9010



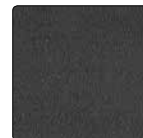
AVORIO  
PR1013



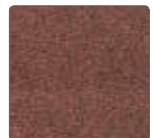
GRIGIO MATT  
PR9006



GRIGIO FERRO  
PRIIRGR



CORTEN  
PRCORT



\*recommended colours vary per model, see properties on pages 28/29

	Alu	Tecnic	Level	Still
<i>Structure</i>				
Max. drop (depth) mm	5500	8000	6500	7000
Max. width 1 module mm	5000	5000	5000	5000
Max. height post mm (standard up to ...)	2500	2500	2500	2500
Max. width 1 fabric mm	13000	13000	13000	13000
Min. angle °	✓	✓	✓	✓
Dimensions of post mm	50x100	NA	150x100	150X100
Post position right	✓	NA	✓	-
Position post slanted	-	NA	-	✓
Integrated water drainage	-	-	✓	✓
Rain-resistant PVC fabric	S	S	S	S
(blackout/translucent)	S	S	S	S
Sun-resistant fabric (Soltis 86, 92)	O	O	O	O
Curved fabric profiles	NA	NA	NA	NA
Fabric suspension tight	S	S	S	S
Fabric suspension zigzag, wave	O	O	O	O
<i>Operation</i>				
Integrated motor	S	S	S	S
RTS control (+manual transmitter)	S	S	S	S
IO control (+manual transmitter)	O	O	O	O
Rain sensor	O	O	O	O
Sun and wind sensor	O	O	O	O
<i>Colours</i>				
Bianco (PR9010)	M	M	M	S
Avorio (PR1013)	M	M	S	S
Grigio mat (PR9006)	S	S	M	S
Grigio Ferro (PRIRGR)	M	M	M	M
Corten (PRCORT)	M	M	M	S
Harol +300 RAL and colours for the textured coating	S	S	S	S
<i>Personalization and comfort</i>				
Dimmable RGB LED integrated into the fabric profile	O	O	O	O
RGB LED lighting in the the frame	NA	NA	NA	NA
Spotlights (5 spotlights 20 Watts) L = 3500 mm*	O	O	O	O
Spots (4 spotlights 20 Watts) L=2500 mm *	O	O	O	O
Heating (2 x 1400 Watts) with 3 spotlights, L = 2500 mm*	O	O	O	O
Heating 1 x 2000 Watts L=483 mm/516 mm RTS *	O	O	O	O
Vertical screens surface-mounted	O	NA	O	NA
Integrated vertical screens	NA	NA	NA	NA

Extension or between two walls						Self-supporting designs		
Infinity	One	Evo	Woodplus	Wood	Fusion	Nomo	Rialto	Phoenix
7000	7000	7000	7000	8000	6500	7000	7000	6000
5000	5000	5000	5000	5000	5000	5500	5500	5000
2500	NA	2500	2500	2500	2700	3000	3000	2500
13000	13000	13000	13000	13000	5000	5500	5500	13000
✓	✓	✓	✓	✓	✓	horizontaal	horizontaal	horizontaal
150X100	NA	150X100	160X140	120X160	100x150	150x150	100x150	150X100
✓	NA	✓	✓	✓	✓	✓	✓	✓
-	NA	-	-	-	-	-	-	-
✓	-	✓	✓	-	✓	✓	✓	NA
S	S	S	S	S	S	S	S	S
S	S	S	S	S	S	S	S	S
O	O	O	O	O	O	O	O	O
NA	NA	NA	NA	NA	NA	S	S	NA
S	S	S	S	S	S	S	S	S
O	O	O	O	O	NA	NA	NA	-
S	S	S	S	S	S	S	S	S
S	S	S	S	S	S	O	O	S
O	O	O	O	O	O	NA	NA	O
O	O	O	O	O	O	O	O	O
O	O	O	O	O	O	O	O	O
S	S	S	NA	S	M	S	S	S
S	S	S	NA	S	O	O	O	S
S	M	M	NA	NA	M	S	S	S
M	M	M	S	S	M	S	S	M
S	S	S	NA	S	M	S	S	S
S	S	S	NA	S	O	O	O	S
O	O	O	O	O	O	O	O	O
NA	NA	NA	NA	NA	O	O	O	NA
O	O	O	O	O	O	O	O	O
O	O	O	O	O	O	O	O	O
O	O	O	O	O	O	O	O	O
O	O	O	O	O	O	O	O	O
O	NA	O	O	O	O	O	O	NA
NA	NA	NA	NA	NA	O	O	NA	NA

Legend O = option / S = standard / M = price reduction / NA = not available / ✓ = present / \* Storelight

Kirsten Hulsmans on her Patio Level



I enjoy plenty of additional living space, comfort and a view of the garden



*Kirsten Hulsmans is very fond of the outdoors. Her cosy rectory in Hasselt opens up onto a large garden. Eighteen months ago, she went in search of a veranda so she could enjoy her garden even more. But her plan soon took a different turn.*

## Heavenly outdoor feeling

She went to look at some veranda builders, but she was not convinced. "I realized that a veranda would reduce the amount of sunlight in the house. And I wanted to avoid that at all costs. Also, I didn't like the fact that you are always enclosed", says Kirsten. Through a friend, she discovered the Harol patio range, and the extremely versatile terrace awnings. "The roof and the optional lateral screens are easy to adjust. Closed, semi-open or fully open ... With a touch of a button you can turn your terrace into a luxurious outdoor room. Exactly what I wanted!"

## In keeping with the house

Meanwhile, the patio has been the show piece of the terrace for eighteen months. "I chose the Patio Level, a versatile model. The awning perfectly matches the style of my home. My home is a country style house, but I have a modern décor with light colours. Even the window and door profiles are a light shade." The Harol Outdoor Specialist helped her choose a matching RAL colour, both for the frame and the screens. "The bright colours, plus the fact that the patio can be fully opened, give me a very spacious and free feeling. It's lovely that I can enjoy my garden like this!"

## Comfort all year round

Kirsten enjoys the four seasons, in luxury. "On my patio, I have incorporated both heating and lighting. I would never want to be without that extra level of comfort again. In the evening, the spotlights and infra-red heating are invariably switched on. No trouble at all with the remote control. If there is a strong wind, I let the screens down and I'm perfectly sheltered, even from insects!" Was her patio worth the investment? "Absolutely, I use it from March to mid-November. If the weather is not too bad, I put up the roof and screens as early as February. That way I benefit almost throughout the year from the additional living space. I read, play games, socialize ... The patio is virtually an extension of my living room."

## Cosy outdoor room

The comfortable outdoor space is not the prerogative of just Kirsten and her son Maximilian. "I love having visitors and will often invite friends over. I regularly relax on the patio, because it's so cosy. The sash, which forms the border with the living room, opens fully. Once night falls, I let the screens down, and immediately the living room becomes a lot larger. My visitors always appreciate the additional comfort and timeless design of the patio. I am regularly complimented on my patio."

*Kirsten*  
xxx

# Slatted roof collection

## *The ultimate in luxury for the self-indulgent*

Are you looking for a timeless design, durability and seamless integration with your home? Then you should discover the slatted roof! This allows you to create a pleasant and cosy environment by allowing more sunlight and air flow as desired. Amazing how much comfort it provides. And all this using the natural energy from the sun and wind!

### **Extremely versatile**

For this solution, you can choose any space around your house that needs to be sheltered. But also in public and commercial spaces, it is the perfect solution. The principle remains the same. Depending on the weather, you can tilt the slats. Open, closed, or one of the many intermediate positions, you decide. Allowing you to enjoy the right amount of sun and light! And in rain or snow? Take advantage of the ingenious drainage system and strength of the solid construction.

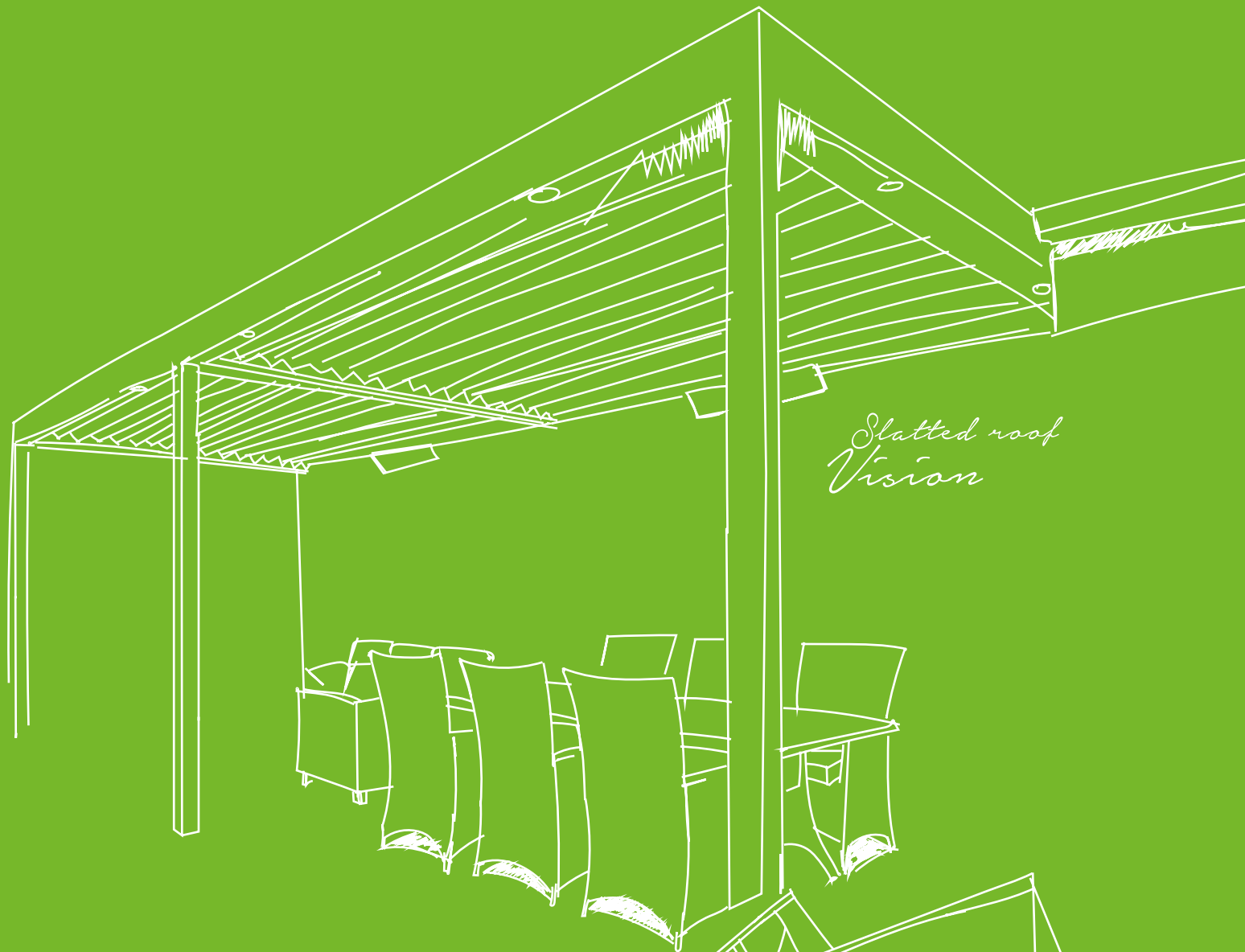
### **Sophisticated look**

Built entirely from aluminium, with a stainless steel finish of the highest quality. No wonder that this solution is a lot more stable and robust than all other systems on the market. And what about the slats? Due to their thickness of 2.5 to 4 mm they are also extremely robust. When closed, the underneath of the system is completely flat and the fixings can no longer be seen. Perfect for a sophisticated look! Even the motor, which is cleverly incorporated into the system, contributes to the extremely modern and sleek design.

### **Comprehensive range**

Our range of slatted roofs is very comprehensive. From the Vision basic model to the more elaborate Opera model. Plenty of options!

*Whichever model you choose:  
With a slatted roof you can enjoy  
your terrace all year long.  
Year after year.  
Your garden becomes an extension  
of your home!*



*Slatted roof  
Vision*



*Slatted roof  
Opera*

*More info:  
↳ [www.harol.com](http://www.harol.com)*

**HAROL®**



Vision



Opera



Vision



# Vision

---

The entry-level Vision has everything you would want from a slatted roof, and more. With its solid, yet sophisticated aluminium construction it will transform your patio into a thoroughly enjoyable outdoor living space. The remote control allows you to smoothly operate the position of the slats, as desired. A large area to span? The Vision has no problem with that. Free-standing or against the wall, this modular construction can be infinitely extended in length and width. The Vision is available as standard in white with various options.



# Opera

---

Would you like a little more luxury? One step up the comfort ladder is the Opera model. This model allows you to seamlessly integrate windproof vertical screens into your slatted roof. The technology is already present in the posts. The - fitted or fitted at a later stage - integrated windproof screens protect you from all sides. This allows you to literally create an extension or 'outside room' to the property. In one go, you can substantially expand your living space. The Opera is available as standard in white. Like the Vision, there are plenty of options for even more comfort and atmosphere. Invite your friends for a barbecue in style!



*Slatted roof*  
**HAROL®**

Opera



# Tilting slats

---

A sun-drenched terrace or would you prefer some shade? Easy to simply tilt the slats and alternate in an instant by simply tilting the slats again. You can enjoy maximum shade without overheating. The slightly tilted slats allow for optimal air circulation. In winter, you can smoothly switch to the position that lets in most sunlight, and thus heat. Result: more comfort and lower energy bills!

## SUNLIGHT CONTROL



Partial or complete modulation of the sunlight and protection against UV radiation.

## AIR RECIRCULATION



Adjustment of airflow to obtain the desired degree of ventilation.

# Screens and vertical walls

---

12u



15u



18u



Vertical wind-resistant screens

# Heating and lighting

---

These days, there are plenty of lighting and heating component options to add to your slatted roof. From dimmable, frame-mounted RGB-LED lighting, or traditional LED spotlights in the slats, to the Storelight heating components. Now you can enjoy unlimited use of your slatted roof, even at night and during those cool evenings. Whichever type you choose, you can fully customize your outdoor space to your personal preferences. It will make you feel even more at home!



## RAIN PROTECTION



Automatic full closure with sensor or remote control.

## SLATS

The integrated gutters keep your terrace dry, even after you tilt the slats. The rainwater is discharged efficiently along the posts.



Glass sliding wall



LED: integrated lighting with RGB coloured lights including white light and a variation of brightness and Spot Light spotlights.

# Operation and weather station

On all models, the motor, the controls and the mechanism are fully integrated and hidden. The advantages: A subtle, clean look and an extra long life. Striving for excellence at every step, that's Harol.

A popular option is the weather station with solar and wind or rain and snow sensor. Understandable. You won't need to worry about your slatted roof. Based on the weather conditions, it automatically selects the optimum position.

→ *Carefree  
enjoyment,  
all year round.*



## Colours

### Opera, Vision:

Optie: all RAL colours and a wide range of colours for the textured coating (K-7RAL range)



### Standard:

BIANCO  
PR9010



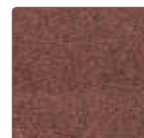
GRIGIO MATT  
PR9006



GRIGIO FERRO  
PR1RGR



CORTEN  
PRCORT



*Slatted roof*  
**HAROL®**

# Slatted roof

	Vision	Opera
<i>Structure</i>		
Max. depth mm	5900	6000
Max. width 1 field mm	4500	4500
Max. post height mm	2700	2700
Connectable in the width	✓	✓
Connectable in the depth	✓	✓
Dimensions of post mm	100x150	150x150
Post position right	✓	✓
Integrated water drainage	✓	✓
Slat width mm	220	220
<i>Operation</i>		
Integrated motor	S	S
Hand-held transmitter	S	S
Rainsensor	0	0
Sun and wind sensor	0	0
Snow sensor	0	0
<i>Colours</i>		
Bianco (PR9010)	S	S
Grigio mat (PR9006)	S	S
Grigio Ferro (PRIRGR)	S	S
Corten (PRCORT)	S	S
Harol +300 RAL colours and colours for textured coating	0	0
<i>Personalization and comfort</i>		
White LED in slats	NA	NA
White LED in frames	0	0
Dimmable RGB LED in slats	0	0
Dimmable RGB LED in frames	0	0
Spotlights (5 spotlights 20 Watts) L = 3500 mm	0	0
Spotlights (4 spotlights 20 Watts) L=2500 mm	0	0
Heating (2 x 1400 Watts) with 3 spotlights, L = 2500 mm	0	0
Heating 1 x 2000 Watts L=483 mm/516 mm RTS	0	0
Music	NA	NA
Pendant light (preparation)	NA	NA
Fixed aluminium frame with wooden slat support	NA	NA
Overhang in roof with fixed wooden slats in roof	NA	NA
Curtains	NA	NA
Glass sliding wall	0	0
Vertical screens integrated	NA	0
Vertical screens surface-mounted	0	NA

# Harol: your partner for the perfect outdoor living solution

---

## 1. FITTED BY SPECIALISTS

All our solutions are installed by experts with many years of experience in the industry. Moreover, our specialists regularly attend courses at Harol to stay up-to-date with the latest installation techniques, maintenance and advice.

## 2. 100% GUARANTEED QUALITY

2. As a Belgian manufacturer with over 60 years of experience in the field, we ensure that our solutions meet the strictest quality standards. Moreover, we offer a 5-year quality guarantee on all products.

## MADE-TO-MEASURE SOLUTIONS

3. All our solutions can be perfectly tailored to meet your needs:
- > You can choose from over 300 RAL colours and scratch-resistant textured coatings
  - > Our products are suitable for new build and improvements/renovation
  - > Extensive range of options to increase your comfort to a maximum

## 4. EASY TO OPERATE

All our solutions are available with motor and remote control. They can be operated in different ways (manually or electrically) and they can be linked to an automatic control.

## 5. FULL SERVICE FROM START TO FINISH

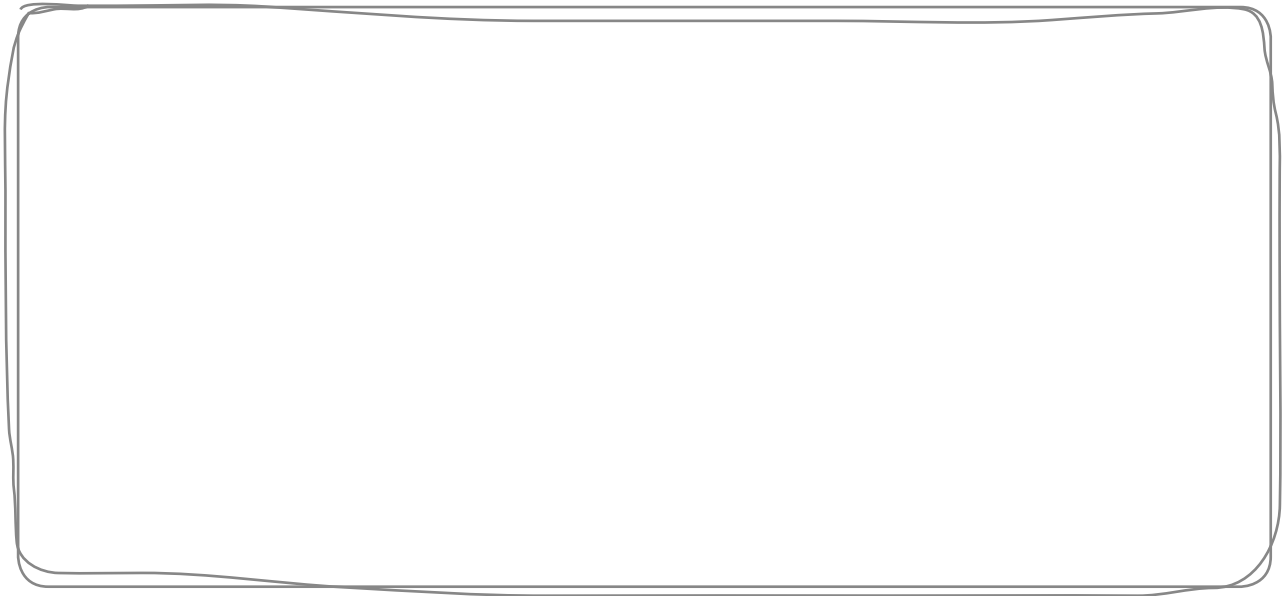
Our specialists will assist you with advice and support:

- > You can call on them for the correct advice based on your needs and requirements
- > For questions about colours, materials and maintenance
- > After-sales service

*More info:*  
↳ [www.harol.com](http://www.harol.com)



*Your Harol distributor:*



**HAROL®**



[www.harol.com](http://www.harol.com)